


# Housing 101



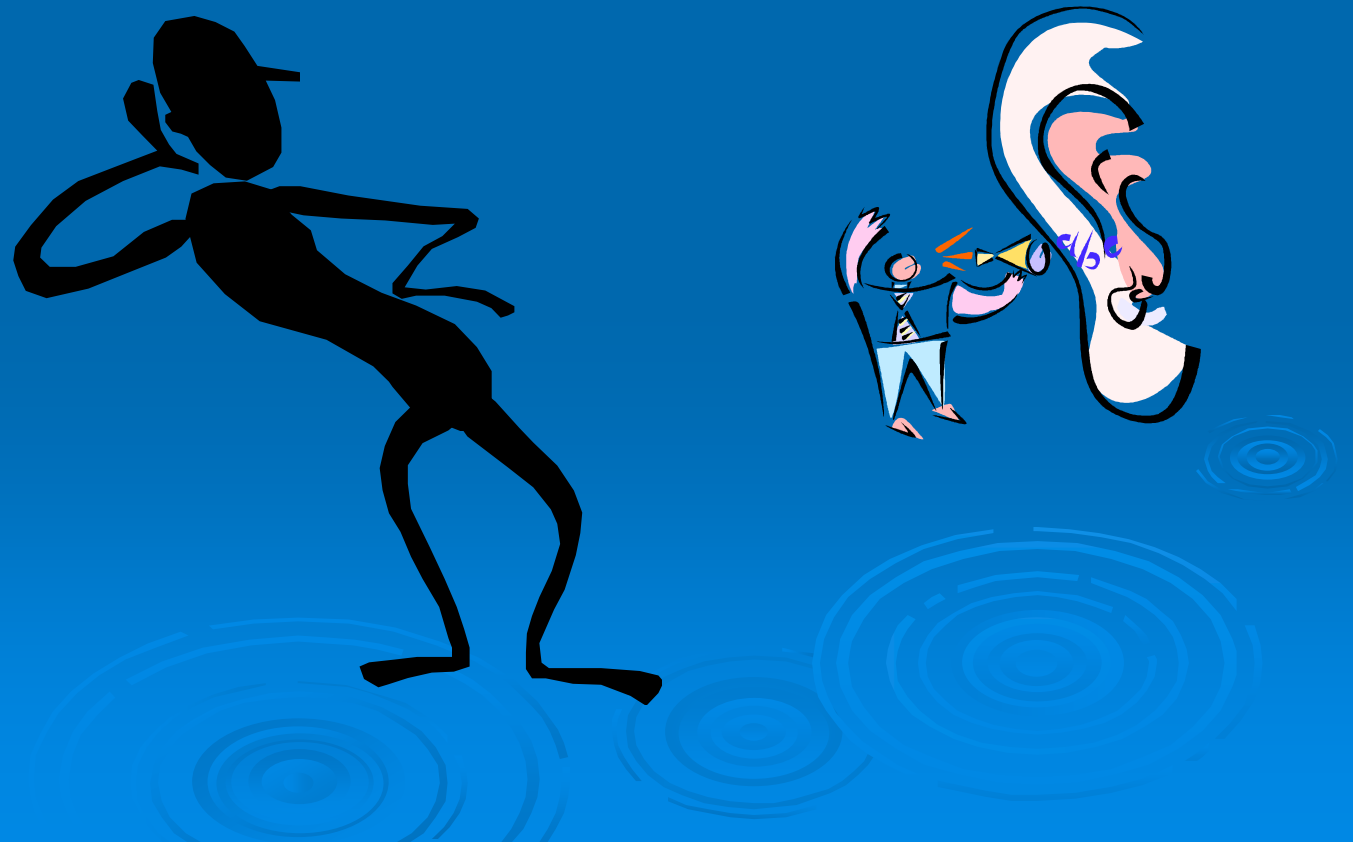
# SCI Education Session: Housing 101

## **What are you going to learn today?**

- The different housing options available (both public and private)
  - How your care needs will effect housing options
  - How to start planning for your own housing needs – who to talk to
- 

# A lot of information will be covered

- Handouts available covering everything that I have talked about



# Subsidized Housing (No Care Attached)

- **What is subsidized housing?**
  - **Public Housing (BC Housing)**
  - **Non-Profit Housing**
  - **Co-Operative Housing**

# BC Housing

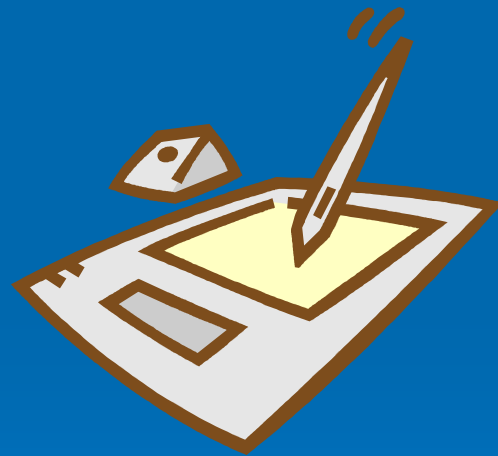
BC housing units are available for people with low to moderate incomes. The cost is 30% of net household income.

- Eligibility Criteria
- Income Requirements
- Residency requirements

## How to Apply to the BC Housing Registry

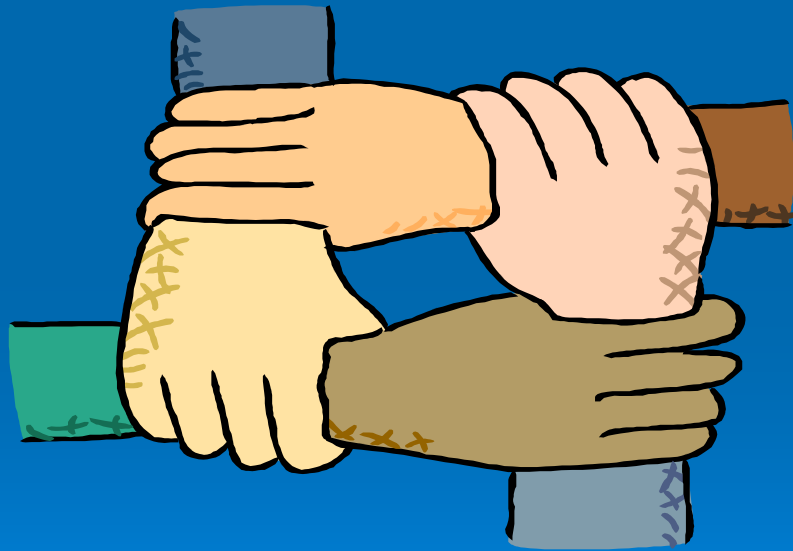
- Applications are available on the BC Housing website ([www.bchousing.org](http://www.bchousing.org))
- Discuss application process with your SW

# General Tips Regarding BC Housing



# Co-Operative Housing

**What is a Co-op?**





# Definitions, Values and Principles of Co-Op Living



## Other notes about Co-ops

- One of the best places to find accessible and affordable housing

For more information:

Co-Op Housing Federation of BC  
([www.chf.bc.ca](http://www.chf.bc.ca))

## Final Notes: BC Housing and Co-Op Living

- No over housing (One person cannot be in a two bedroom)
- residency requirement
- Use of the term 'accessible'
- The more places you apply to, the more of a chance you will get something
- Keep a list of everywhere you apply and remember to follow up regularly!

# Supported Housing for People with Disabilities

## Housing with Care Attached

There are various models of care under the umbrella of subsidized 'Supported Housing' in Vancouver Coastal Health for clients with disabilities who are unable to live independently. They are:

- **Clustered Shared Care**
- **Cooperative Shared Care**
- **Low Support Group Homes**
- **High Support Group Homes**

# Issues to note about Supported Housing

## ➤ Cost


Who to talk to – Transition Services Team clinician (TST) does the assessment




# Residential or Complex Care Facilities Care Attached

## **What is Residential or Complex Care?**

**Facilities that offer 24 hour/day  
professional nursing care and  
supervision for people with complex  
care needs**



# Categories of Residential Care Facilities

- **Facilities directly operated by VCH or local health authority**
  - **Facilities operated by providers who have a contract with VCH or local health authority**
  - **Private facilities that have no connection with VCH or local health authority**
- 

# Residential Care: Issues to Consider

- Not all beds are equal
- Cost: 80% of after tax income OR if on PWD will be paid by the Ministry of Socail development and will receive \$95.00 comfort check as spending money
- Variety of staff
- Some sites have religious affiliation

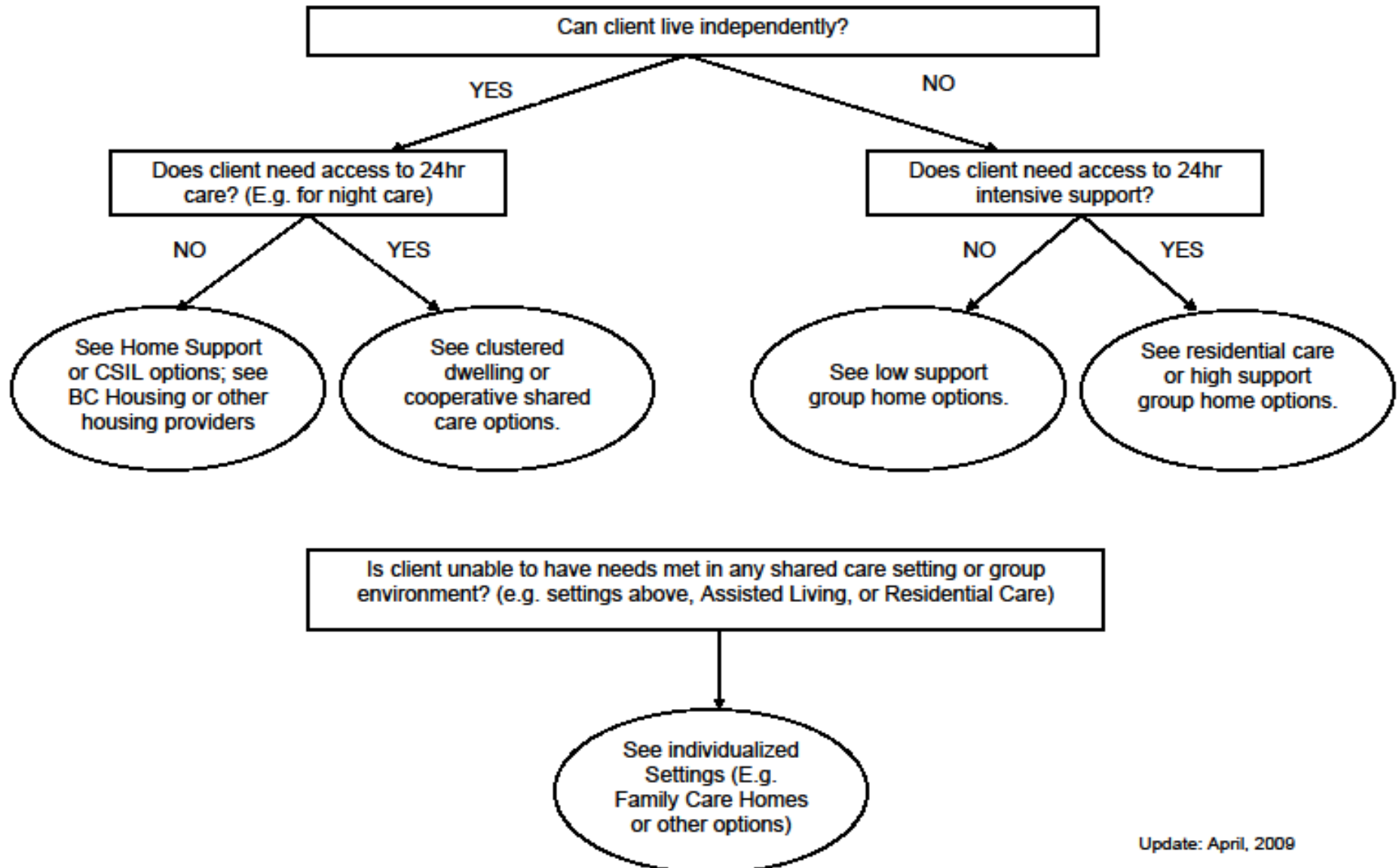


## Residential Care Application Process

- First Available Appropriate bed policy (FAAB)
- Who helps with the application process?  
Transition Services Team clinician (TST)
- Where to get more information

### Decision Tree Summary

(For details see Models of Housing and Care)



Questions??

