

VCH Youth Clinics on the Coast

Gibsons Youth Clinic: 604-984-5070
821 Gibsons Way; Monday 3-530pm

Pender Harbour Youth Clinic: 604-883-2764
5066 Francis Peninsula Rd; Tuesday 3-5pm

Sechelt Youth Clinic: 604-885-5164
5571 Inlet Ave; Wednesday 3-5pm



Crisis Numbers:

*Crisis and Suicide
Intervention BC:* 1-800-
SUICIDE (784-2433)

Kids help phone: 310-1234
or 1-800-668-6868



Substance Use info:

FoundryBC.ca: resource
for young people aged 12-
24

Drugcocktails.ca: facts
about mixing medicine,
alcohol, and street drugs



Emergency numbers:

911 - Fire Department and
RCMP

Sechelt Hospital Emergency Room

5544 Sunshine Coast Hwy

604-885-2224

Access to Youth Hospital Liaison for acute mental
health supports

Contact us:

Sunshine Coast Youth Program
Sunshine Coast Mental Health and Substance Use Services
Vancouver Coastal Health
5542 Sunshine Coast Hwy, PO Box 949
Sechelt, BC V0N 3A0

Phone: 604-885-6101

Fax: 604-885-5842

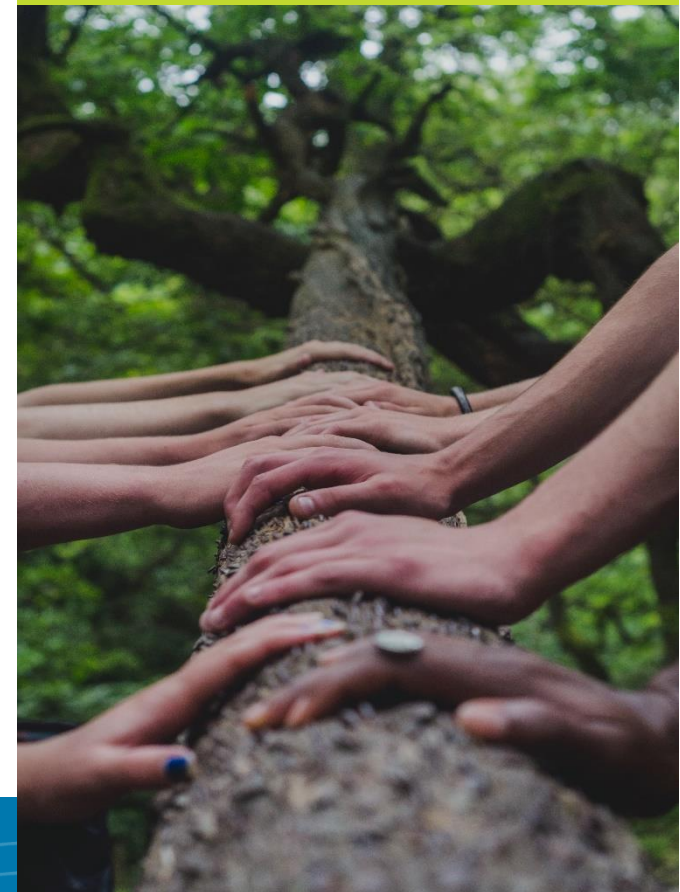
Email: SCYP@vch.ca



Vancouver
CoastalHealth

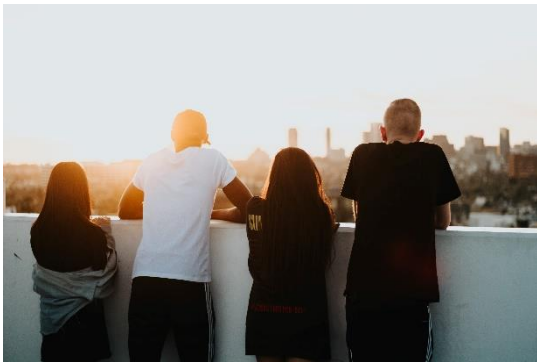
Sunshine Coast Youth Program (SCYP)

Sunshine Coast Mental
Health and Substance Use
Services



Who we are and what we do:

The SCYP is a multidisciplinary team with the mission of offering innovative, client-centered, and culturally sensitive services to youth. Our objectives include raising the level of continuity of care, encouraging young people to take an active role in their own care, and enhancing communication among a young person's care team members. SCYP has a goal to respond quickly to youth who come to our service, especially those who present at the Sechelt Hospital Emergency Room through the Youth Hospital Liaison.



Population served by SCYP:

The target population for SCYP consists primarily of youths:

- Between the ages of 12 to 24 years (voluntary service)
- With complex needs (including substance use, cognitive disabilities, homelessness, high risk behaviors or mental health challenges)
- Living on the Sunshine Coast
- In need of wrap around services (not already connected to a comprehensive care team)

The Team:

- Clinical Coordinator
- Youth Hospital Liaison
- Youth Outreach Worker
- Youth Clinician

What to expect with SCYP:

- Client Centered
- Flexible
- Responsive
- Community Based
- Holistic
- Indigenous Cultural Safety
- Harm Reduction



Services that we offer:

- Responsive to Sechelt Hospital Emergency room (Youth Hospital Liaison)
- Assertive Engagement with Youth (Youth Outreach Worker)
- Collaborating, partnering, and advocating for youth with community care providers and services
- Youth care planning (responsive to Sechelt Hospital Emergency Room)
- Youth mental health and substance use services navigation including referral support
- Monitoring and follow up supports (warm handover between services)
- School/Community care provider competence and confidence building in managing youth with complex mental health and substance use needs
- Evidenced based approaches to youth mental health and substance use care