

SimMan ALS Simulator Info Sheet



Lubricate airway tools before insertion

Airway

- BVM with chest rise
- Oropharyngeal airway (OPA), nasopharyngeal airway (NPA), supraglottic insertion
- Suctioning (oral and nasopharyngeal)
- Endotracheal intubation
- Lung sounds available
- Needle decompression (at bilateral mid clavicle line, 2nd intercostal space), **22/24 gauge**
- Chest tube insertion (**must have orientation with VGH SIM staff before**)
- Cyanosis

Defibrillation

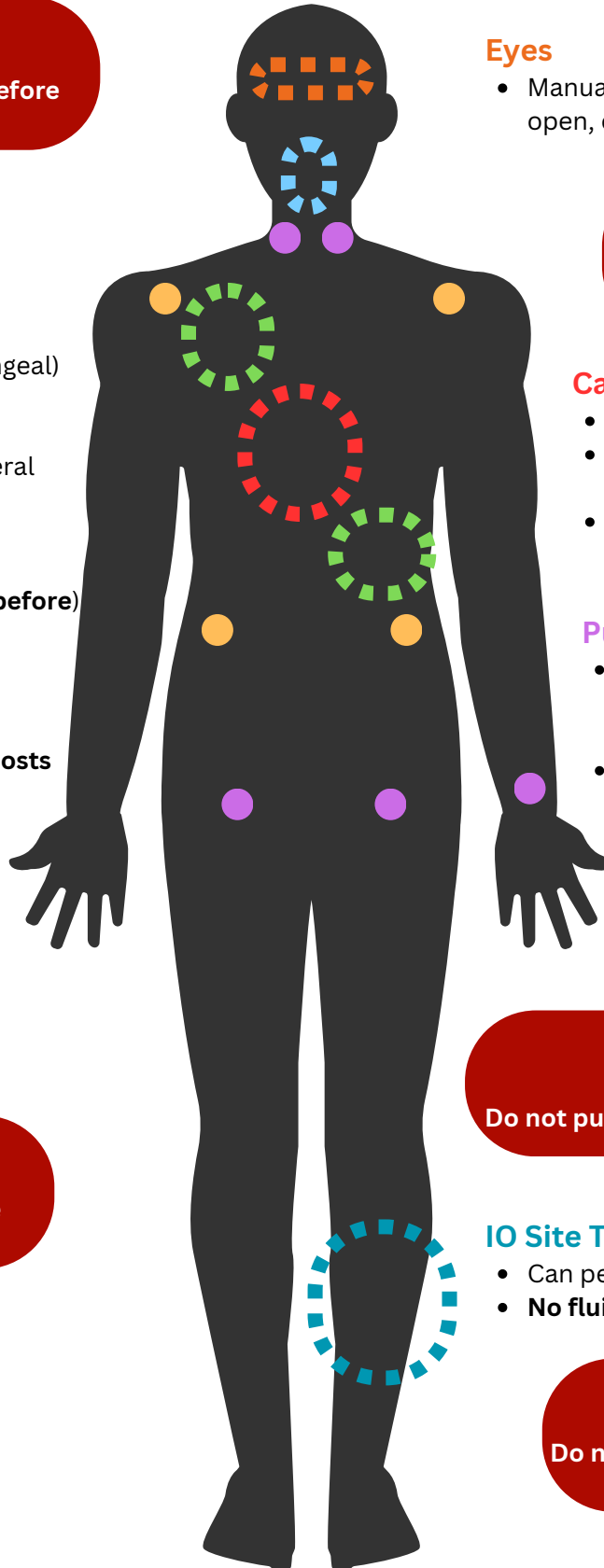
- Live defibrillation (**Shocklink or posts attachment only**)
- Pacing

ECG Connectors

- Can attach monitor to limb lead posts for 3-lead ECG



Do not expose to extreme temperatures



Eyes

- Manually set eyelids to open, half open, or closed



No cutting or surgical procedures

Cardiac

- ECG artifacts with compressions
- Instructor-view QCPR through SimPads/tablets/iPads
- ECG monitoring with a library of common ECGs (all ACLS rhythms)

Pulses

- Left radial, bilateral carotid and bilateral femoral pulses (activate with palpation)
- **Do not press forcefully when palpating pulse points or no pulse will be felt**



Do not push or inject any fluids

IO Site Tibia

- Can perform drilling
- **No fluids**



Do not use any staining materials on the skin

Last updated: September 2023