

# SimMan Essential Simulator Info Sheet



Lubricate airway tools before insertion

## Airway

- BVM with chest rise
- Oropharyngeal airway (OPA), nasopharyngeal airway (NPA), supraglottic insertion
- Suctioning (oral and nasopharyngeal)
- Endotracheal intubation
- Lung sounds available
- Needle decompression (at bilateral mid clavicle line, 2nd intercostal space), **22/24 gauge**
- Chest tube insertion (**must have orientation with VGH SIM staff before**)
- Cyanosis

## Defibrillation

- Live defibrillation (**posts attachment only**)
- Pacing

## ECG Connectors

- Can attach monitor to limb lead posts for 3-lead ECG



Do not expose to extreme temperatures

## Eyes

- Blinking eyelids
- Eyes open, closed, or partially open
- Reactive pupils



No cutting or surgical procedures

## Cardiac

- Anatomical auscultation sites
- Compressions generate pulses, BP wave form, ECG artifacts
- Instructor-view Q CPR through SimPads/tablets/iPads
- ECG monitoring with a library of common ECGs (all ACLS rhythms)

## Pulses

- Carotid, brachial, radial, femoral, dorsalis pedis, and posterior tibialis pulses (activate with palpation)
- **Do not press forcefully when palpating pulse points or no pulse will be felt**



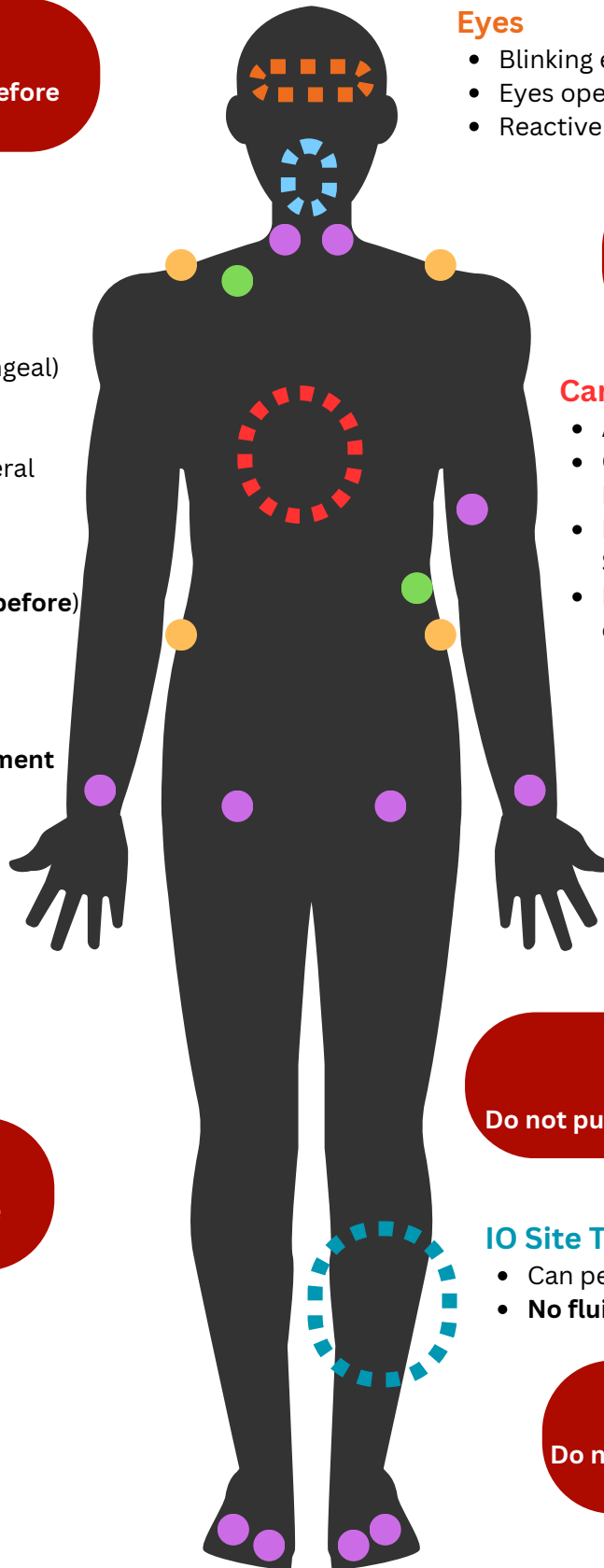
Do not push or inject any fluids

## IO Site Tibia

- Can perform drilling
- **No fluids**



Do not use any staining materials on the skin



Last updated: September 2023