

Intracerebral Hemorrhage : Information for patients and families

Vancouver General Hospital Intensive Care Unit

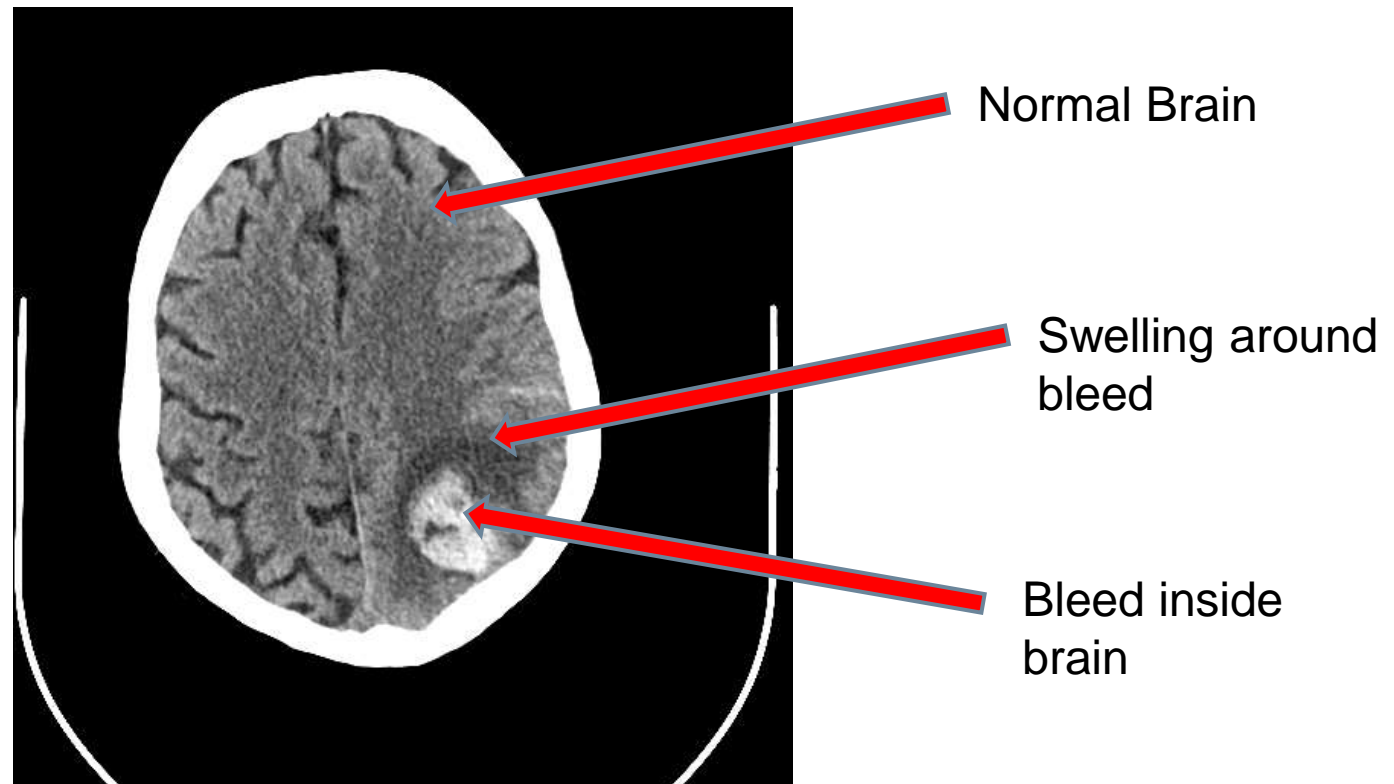
Myp Sekhon MD
Clinical Instructor, Staff Intensivist
Vancouver General Hospital
Division of Critical Care Medicine
University of British Columbia



Definition

- Outline
- Definition
- Causes
- Diagnosis
- Imaging
- Management
- Prognosis

An “intracerebral hemorrhage” is a bleed inside the brain that causes damage to the brain and surrounding structures



Causes – why did this bleed happen

High blood pressure (hypertension) is the most common cause of this type of bleed

Other less common causes include:

- Trauma
- Drugs
- Blood thinners
- Cancer
- Abnormal blood vessels
 - Aneurysm or other less common problems



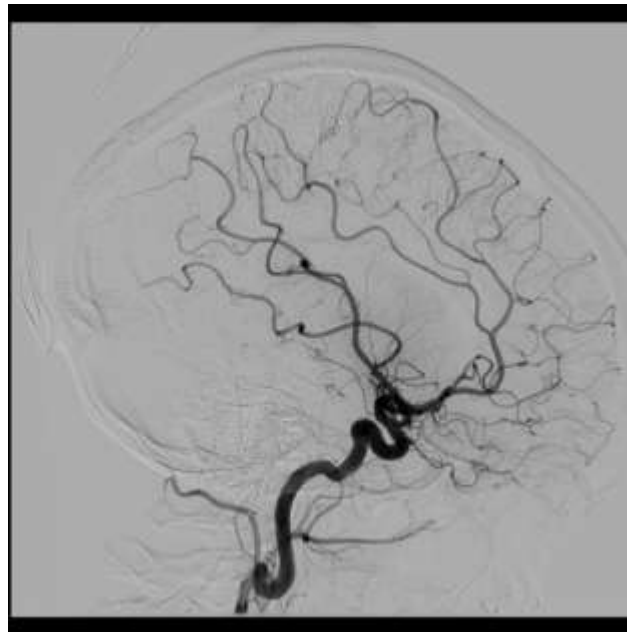
Diagnosis – how do we find out?

Outline
Definition
Etiologies
Diagnosis
Imaging
Management
Prognosis

A CT scan is able to show the presence of a bleed

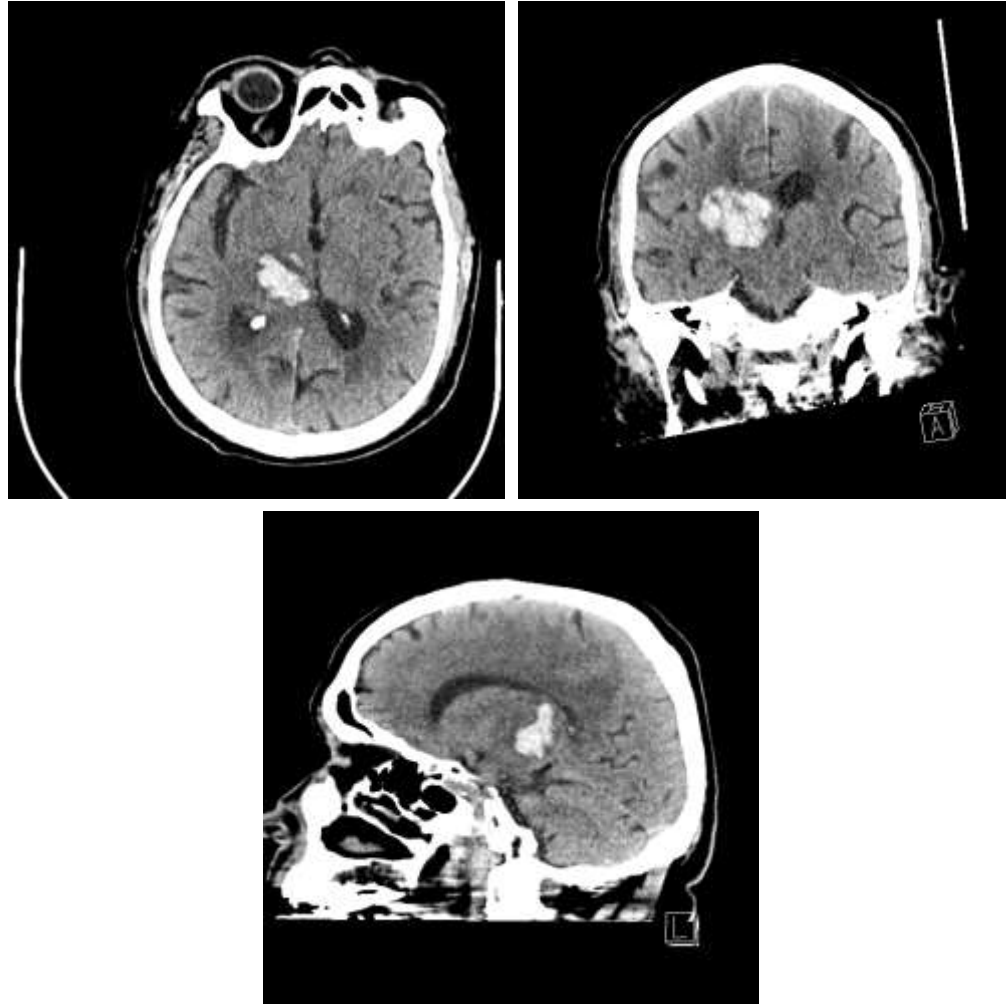
Sometimes, a detailed exam of the brain's blood vessels (angiogram) is done to rule out diseases of the vessels (aneurysm etc.)

Angiogram



Diagnosis - Imaging

Outline
Definition
Etiologies
Diagnosis
Imaging
Management
Prognosis



A bleed deep within the brain – characteristic of high blood pressure



Treatment

- Outline
- Definition
- Etiologies
- Diagnosis
- Imaging
- Management
- Prognosis

Establish a cause

- High blood pressure is the most common cause but some patients may need further tests

Medical treatment

- Blood pressure control – we use medications to control the BP to prevent another bleed
- Ensure the patient's blood is not thin
- Often, we need to sedate patients with medications to allow the brain to heal
 - If patient's are sedated then we assist their breathing with a machine (ventilator)

Surgery

- Surgery may be required but also comes with risks



Prognosis

Predicting an outcome can be difficult, however, certain factors may help

Factors associated with a bad outcome:

- Older age
- Previous multiple diseases (diabetes, kidney disease, heart disease, strokes etc)
- Previous dependant functioning
- Size of the original bleed
- Decreased level of consciousness after the bleed
- Location of the bleed
 - If the bleed occurs in vital areas of the brain, the outcome is usually worse



Outline
Definition
Etiologies
Diagnosis
Imaging
Management
Prognosis

Questions

Ask us!

That's what we are here for!

VGH Intensive Care

